

MONITORING BRAIN ACTIVITY FOR STRESS ANALYSIS USING EEG SIGNALS DATASET AND MACHINE LEARNING

NIMMALA KARNAKAR

Assistant professor, Department of ECE
Mina institute of Engineering and Technology for Women, Miryalaguda, TS.

Abstract: Researchers use psychological feedback technologies including skin conduction (S), electroencephalography (EEG), and electrocardiography (ECG) to ascertain the potential circumstances of users during task execution. Through a series of cognitive tests, in which individuals perform a number of mentally taxing tasks, a set of protocols is produced. Electroencephalography (EEG) has a high temporal resolution that makes it possible to continuously monitor brain states like stress, emotions, and mental exertion in humans. Evaluating the effectiveness of cognitive stress recognition systems is the primary objective. inadequate choice of bands and EEG channels for the stress recognition system. employing an EEG brain interface with the fewest number of channels feasible. One dimension reduction method for reducing the amount of data from the root is the Quick Fourier Transform. Three model taxonomy algorithms were trained using the obtained FFT and correlation-based feature subset selection techniques: SVM, K-Nearest Neighbour (KNN), Decision Tree (DT), and artificial Neural Networks (NN). We may anticipate that patient monitoring using brain monitoring techniques, such as stress testing, will be both affordable and dependable.

Keywords: EEG Signal Analysis, Stress Analysis, DT, ANN, KNN

I. INTRODUCTION

Depression effects all aspects of life and is associated with a variety of illnesses. More studies on Stress analysis have been published in recent years. According to recent reports, depression has affected 75 percent of the population. It affects the physical health of people and society. Biological and physiological markers were used to assess stress. Several studies in neuroscience have linked stress levels to changes in brain activity in the limbic system and other areas using non-invasive methods such as functional magnetic resonance imaging (fMRI) and electroencephalography (EEG) Khorshidtalab (2019).[1] EEG, on the other hand, can only calculate

the activity of the cerebral cortex and respond to sound. As EEG is non-invasive and has the benefits of rapid signal detection and high-resolution resolution, according to. As the EEG receives signals from the head, combining it with a mask, which can be used to protect the wearer in the event of an industrial accident, makes it easy to install as wearable technology. Suggested bio-signal studies and EEG measurement work with a protective helmet. The dense structure of the EEG electrode on the human skin is believed to be essential for reliable pressure relief. Clinical EEG systems have multiple channels, which makes them difficult to use Madhuri et al. (2013) [2]. Used to make emotions stand out. Obtaining an electroencephalogram (EEG) is the first step. This includes placing electrodes in different positions of the skull to collect electrical signals that capture the thought or intent of the story. EEG trading equipment (such as Neuro sky Mind wave mobile headsets) can be used to receive EEG signals. A computer system or digital signal processor that filters out DC noise and drifts. Decomposition techniques have also been used for various signal characteristics.

EEG alarm channels:

Delta (0.5–4Hz),

Theta(4–8Hz),

Alpha(8–13Hz),

Beta (13–30 Hz), and

Gamma (above 30 Hz).

As a result of post-human stress isolation, high beta and low gamma)) neural oscillations have been applied in a less suggested manner (FP1). A single-channel EEG headset is used in this examination to record brain activity. These EEG data are translated into wavelength sub bands, which are subsequently used to create working vectors. The suggested class management technique involves the elimination, selection, and classification of functions in the categories of objects and methods.

II. RELATED WORK

Stress testing has been conducted for many years. Scientists and researchers often refer to stress, and stress has many meanings. It is believed that stress is related to mental awareness and emotion when it exceeds one's ability. Researchers use a psychological feedback system. Recognize the user's emotional state during the task, such as B. skin conductance (SC), Electroencephalogram (EEG) and electrocardiogram

(EKG). In the brain-computer interface, psychophysiological feedback has been proven to be effective in identifying the cognitive state.

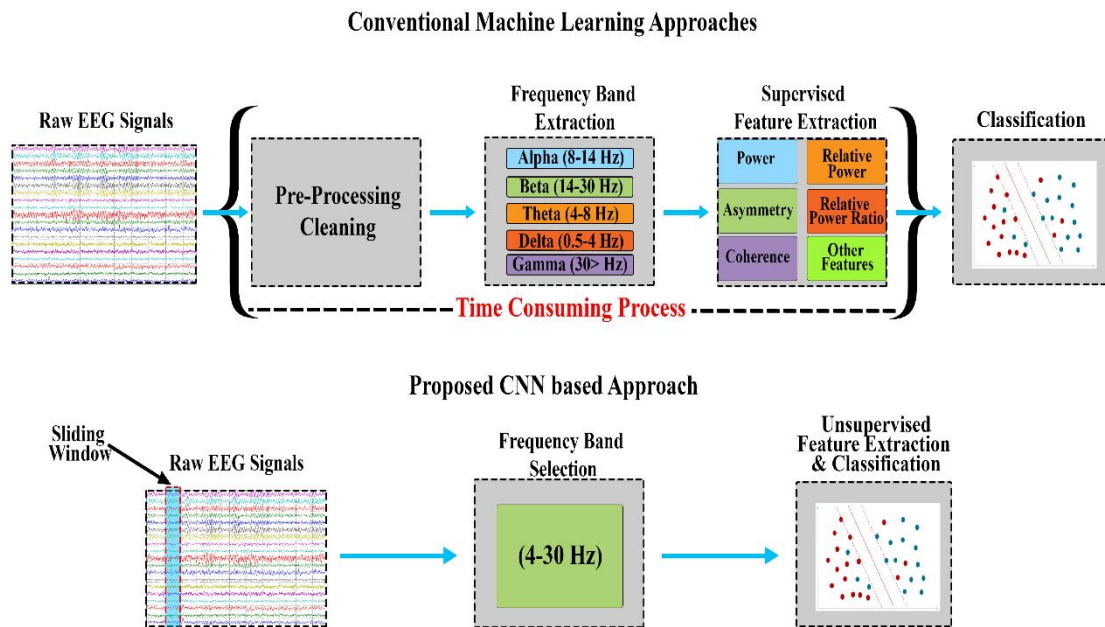


Fig 1 Machine learning Approaches for Stress Testing

Furthermore, the close combination of features is employed to distinguish the sample groups. This is also an issue, particularly when the category difference is minimal. LDA is too close to the data in this example since it considers the mean to be the distinguishing element rather than the variance. By using KNNN, LDA and ANN with the nearest neighbours, the efficiency of this method can be improved. Sanay Muhammad Umar Said and his colleagues employed only one channel of signal capture and applied Fourier transforms (FFT) to the collected EEG signal to transform the data in the frequency domain. [4] These recorded EEG signals are sub-bands of the received signals. k use the SVM classifier to build the closest neighbour, pulse, and four support vector machines in order to determine the voltage level of each polynomial. Li Yuezhe and her colleagues achieved the greatest results by receiving EEG signals centred on the taand delta waves via a single channel Zheng and Subbulakshminu-rugappan (2018) Hosseini (2021) [5]. Classifier for each situation (predicted state-speech meditation). Akaliya Devi and his colleagues extracted the eeg signal from fp1 and used the FFT algorithm to divide it into sub band frequencies: Delta is 4 Hz, Theta is 4-7 Hz, Alpha is 8-13 Hz, Beta is 13-30 Hz, Gamma is greater than 30 Hz, and Mu is 8-12 Hz. Filters with infinite impulse response (IIR) and discrete wavelet decomposition are

also employed. To lessen the computational burden, a low DWPT is recommended. To assess and compare performance, they utilized Support Vector Classifier (SVM) and Artificial Neural Network (ANN). Using support vector machines (SVM) and artificial neural networks (ANN), according to experiments, they show the highest classification accuracy. Nicholas Cimitt1 and his colleagues used a channel and considered the spectral characteristics [6].

Changing the number of bins allows the use of SVM ranges higher than 40 Hz. They discovered that increasing the number of compartments can enhance the accuracy of our SVM classifier by up to 80%. I'm putting in long hours. Researchers SalehaKhatun and his team used temporal domain and spectral domain data gathered from the Fpz channel [7]. Based on the existing work, it is clear that feature extraction has a significant role to play in the process of human stress recognition in any BCI applications. Most of the methods have used multiple EEG channels and bands for signal processing due to which the computational complexity is increased. No one has claimed about suitable channels and bands for stress recognition. Specifically, in the field on brain-computer interface, fully automated real-time stress recognition has not been implemented yet. Most of the feature extraction methods have used statistical property and spectral property features for classification rather than cepstral coefficient property features. Hence, an attempt is made to automate the process of feature extraction and classification which would be a further process stress recognition. Therefore, an automated framework is designed and implemented for human stress recognition based on different feature extraction and classification techniques. Also, EEG signal analysis serves as various purposes of making individuals life healthy through stress recognition.

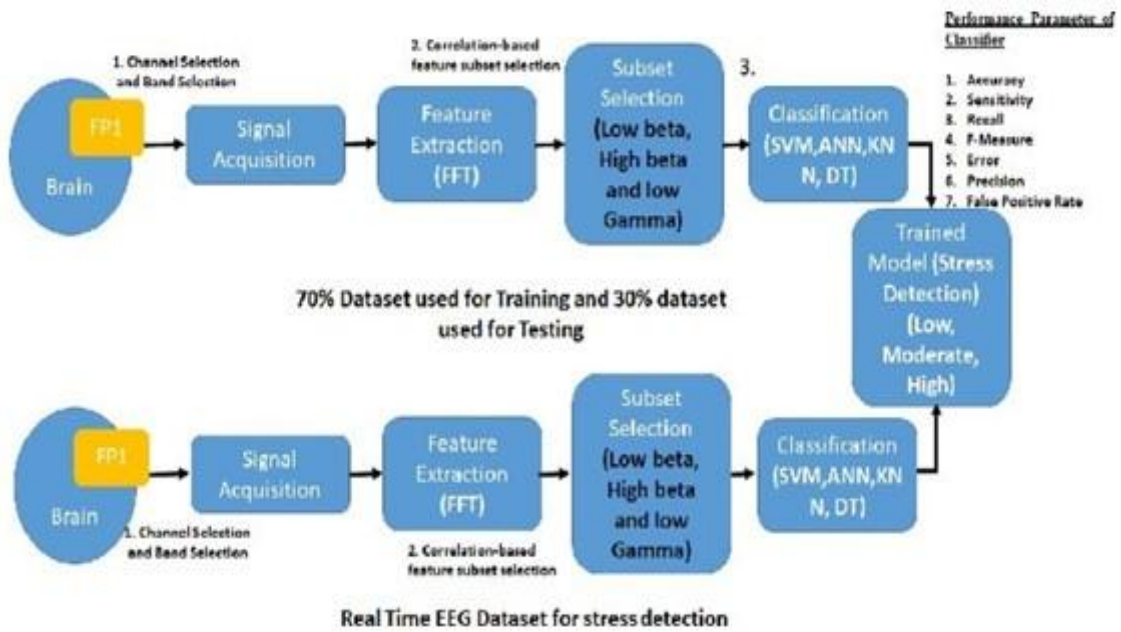


Fig 2 Real time EEG data set

DATA ACCESS

With the invention of the EEG, the Neuro sci Mind wave mobile headset was used. The pocket contains a microphone, earpiece and sensor arm. The ear canal has reliable and grounded head electrodes, while the EEG electrode is located above the eye (FP1 position) on the forehead. The headset emits 12-bit raw-brains at a sample rate of 512 Hz (1–100Hz). The output of the EEG signal is affected by signals from other sources [31][32]. In biomedical measurement systems, name noise becomes an important part of signal analysis. The EEG signal is accompanied by a large amount of noise. It is surprisingly difficult to distinguish the required diagnostic features from the EEG signal without taking the audio signal. To eliminate distractions from EEG signals, different researchers have developed different methods to process the signals [36] Suryawanshi et al. (2022) [8], [9].

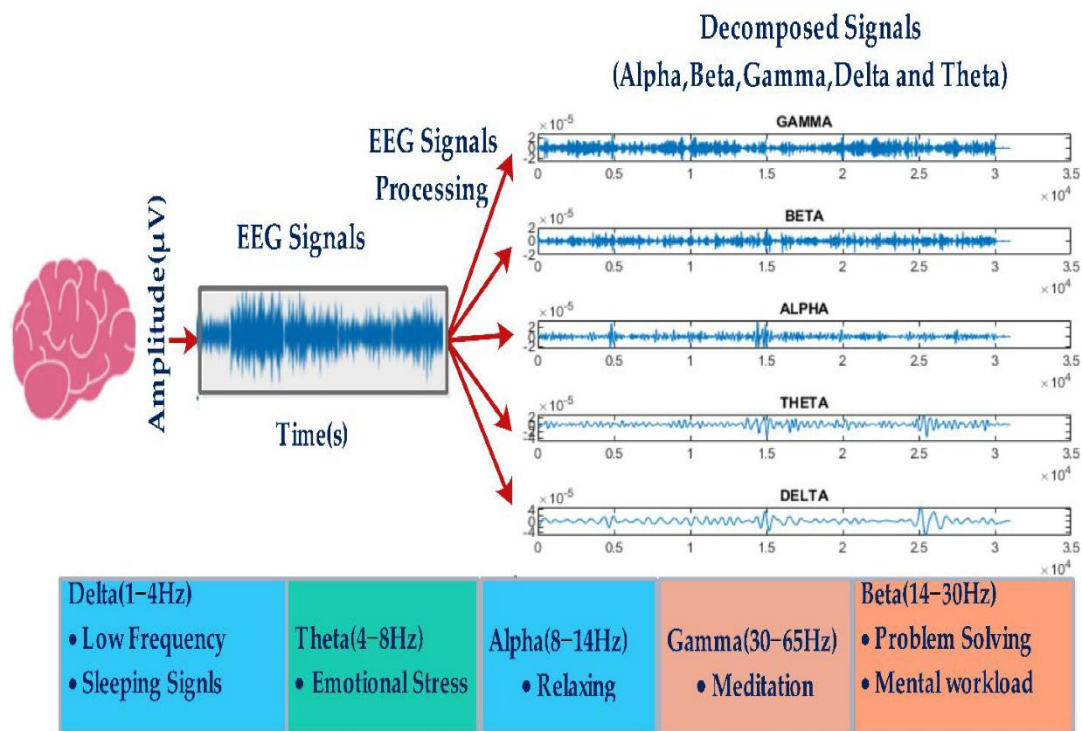


Fig 3 Data Processing Procedure

III. FEATURE EXTRACTION AND SELECTION

Choose a feature subset and score it using the objective function; the goodness of the feature subset will be used to determine which part of the search space to investigate next. And once we have finished this module, we will have a final function subset, which our machine learning or pattern recognition algorithm can use. So we will begin with an empty feature set and gradually add features. Then we have tried each of the remaining features and estimate the accuracy for each one. For each particular function, we estimated the classification or regression error. The validation collection, rather than the training set, used to assess which function offers the greater improvement. If there is no noticeable change, we have stopped processing. The data is converted into the standard domain by applying Fourier Transform (FFT) to the captured EEG signal. In addition, a band-pass filter is used to develop feature vectors based on neural wave forms to exclude sub-bands of sub-bands.

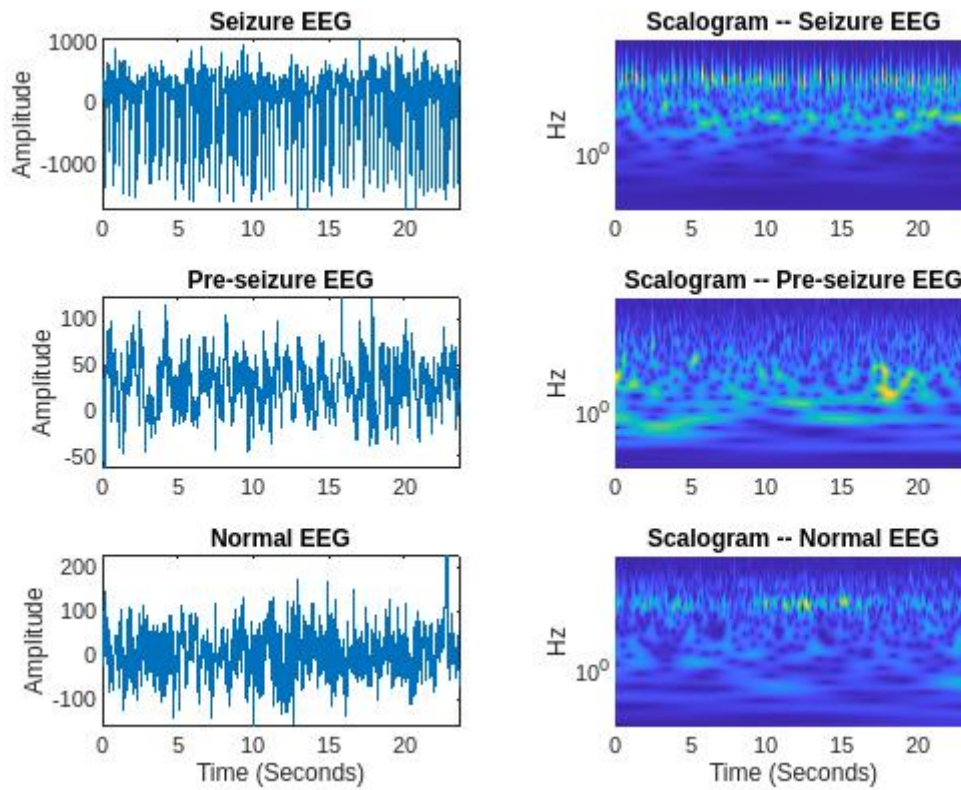


Fig 4 Time frequency allocation for EEG signals

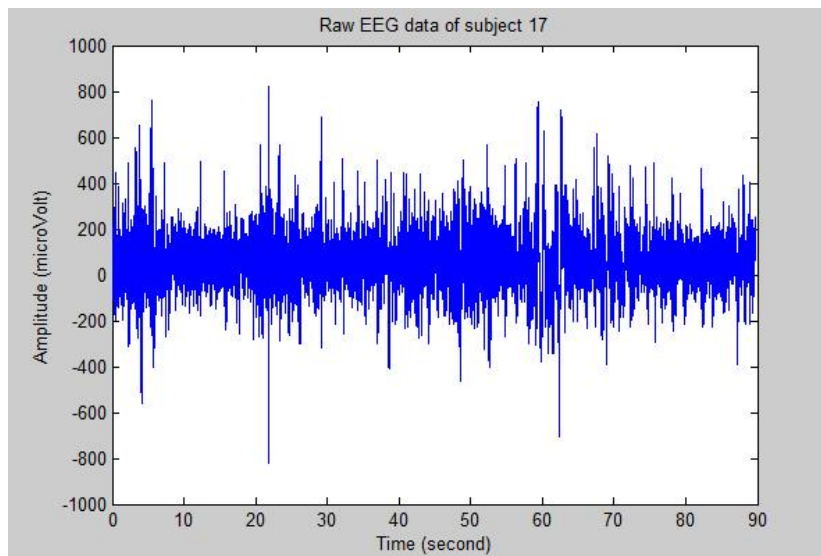


Fig 5 Raw EEG data

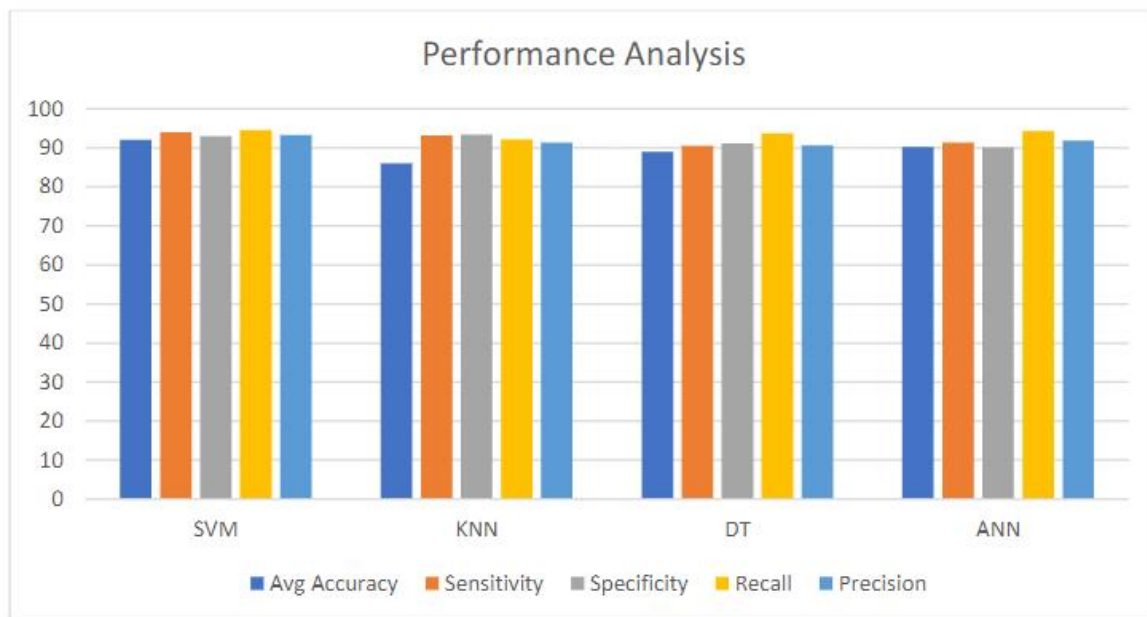


Fig 6 Comparative Analysis

The basic classifier used in most machines' learning problems were the most common divisions evaluated by BCI. Since then, researchers have concentrated their efforts on defining and improving classification methods for EEG-based BCIs. The poor signal quality and signal strength of the EEG, as well as its variability over time, are major challenges for BCI classification methods Liu et al. (2016b) Poomipat boonyaki-tanont et al [11]. Also, between users, if the user's EEG signal changes during or during this process, the amount of training data that can usually be used to measure. Classifier will be limited, and the reliability and performance of the current BCI will be poor. After integrating EEG data, Fp1 is extracted and sent to various classifiers. They are Support Vector Machine (SVM), K-Neural Neighbors (KNN), Decision Trees (DT) and Artificial Neural Networks (ANN).

Standard classifier for a variety of machine learning situations. Since then, research has concentrated on identifying and developing specific categorization techniques based on EEG data. The primary issues encountered when using the classification approach are the poor signal-to-noise ratio of the EEG data, the instability over time within or between users, and when the EEG signal of the same person is even different between races Suryawanshi et al. (2020) [12]. When switching races, the amount of training data that can normally be utilized to calibrate the classifier is reduced, and the current BCI's reliability and overall performance are poor. Use 70% of the data for training and the remainder for analysis. 30% is utilized for testing. The operating parameters of the

classifiers are accuracy, sensitivity, specificity, recovery rate, F measurement, error, accuracy, frequency of false positives. From above figure its shows that SVM showing good performance in terms of accuracy, sensitivity and recall. Which will definitely boost the performance of model.

IV. CONCLUSION

Advances in signal processing and feature extraction technologies, as well as the development of sensors and signal recorders, have improved the ability to capture signals from human organs, such as human organs. B. Signals from the brain or heart are used to detect a person's condition. To diagnose human psychological or pathological diseases. As a result, the signal classification problem has become important to improve the efficiency of signal-based case classification. The fewer EEG channels using BCI, the better. To lower the amount of data from the root, the Fast Fourier Transform (FFT) is utilized as a dimensionality reduction approach. Three classification model approaches are trained for trait sub groups using FFT and correlation-based selection methods: Support Vector Machine (SVM), K-nearest neighbour (KNN), Decision Tree (DT), and Artificial Neural Network (ANN). The classifier's performance metrics reveal an improvement in accuracy, sensitivity, specificity, recovery rate, F measurement, error, accuracy, and false alarm rate.

References:

- [1]ShivnarayanPatidar, TrilochanPanigrahi, 2017, Detection of epileptic seizure using Kraskov entropy applied on tunable-Q wavelet transform of EEG signals, Biomedical Signal Processing and Control 34 (2017) 74-80, Elsevier.
- [2]X. Liu, G. Wang, J. Gao, Q. Gao, 2016, A quantitative analysis for EEG signals based on modified permutation entropy, IRBM 38(2017)71-77, Elsevier Masson.
- [3]MineyukiTsuda, Yankun Lang, Haiyuan Wu, 2014, Analysis and identification of the EEG signals from visual stimulation, Procedia Computer Science 35(2014)1292-1299, Elsevier.
- [4]Vaid, swati. 2015. "eeg signal analysis for bci interface: a review." <https://doi.org/10.1109/acct.2015.72>.

- [5]Koldijk, saskia, and mark a neerincx. 2016. “detecting work stress in offices by combining unobtrusive sensors” 3045 (c). <https://doi.org/10.1109/taffc.2016.2610975>.
- [6]K. Shahzabeen, a. Wahab, h. A. Majid, and b. Crüts, “analyzing brain activity in understanding cultural and language interaction for depression and anxiety,” vol. 27, no. Pacling, pp. 299–305, 2011.
- [7]01 Sheikh Md. Rabiul Islam, Ahsanullah Sajol, Xu Huang, and Keng Liang Ou, “Feature Extraction and Classification of EEG signal for Different Brain Control machine”, 978-1-5090-2906-8/16/\$31.00 ©2016 IEEE.
- [8]Poomipat Boonyakitanont, Apiwat Lek-uthai, Krisnachai Chomtho, and Jitkomut Songsiri, “A review of feature extraction and performance evaluation in epileptic seizure detection using EEG”.
- [9]03 Apu Nandy, Mohammad Ashik Alahe, “Feature Extraction and Classification of EEG Signals for Seizure Detection”, 978-1-5386-8014-8/19/\$31.00 ©2019 IEEE
- [10]Zhiyong Liu, Jinweisun, Yan Zhang, Peter Rolfe, 2016, Sleep staging from the EEG signal using multi domain feature extraction, Biomedical Signal Processing and Control 30 (2016) 86-97, Elsevier.
- [11]N. Sulaiman, s. Armiza, m. Aris, n. Hayatee, and u. T. Mara, “eeg-based stress features using spectral centroids technique and k-nearest neighbor classifier,” 2011.
- [12]Koldijk, saskia, and mark a neerincx. 2016. “detecting work stress in offices by combining unobtrusive sensors” 3045 (c). <https://doi.org/10.1109/taffc.2016.2610975>.
- [13]R. Subhani, w. Mumtaz, m. Naufal, b. I. N. Mohamed, n. Kamel, and a. S. Malik, “machine learning framework for the detection of mental stress at multiple levels,” iee access, vol. 5, pp. 13545–13556, 2017.
- [14]Madhuri, V., Mohan, M. R. and Kaavya, R. (2013), Stress management using artificial intelligence, in ‘2013 Third International Conference on Advances in Computing and Communications’, IEEE, pp. 54–57.
- [15]02 Poomipat Boonyakitanont, Apiwat Lek-uthai, Krisnachai Chomtho, and Jitkomut Songsiri, “A review of feature extraction and performance evaluation in epileptic seizure detection using EEG”.
- [16] 03 Apu Nandy, Mohammad Ashik Alahe, “Feature Extraction and Classification of EEG signal

[17] EEG Signals for Seizure Detection”, 978-1-5386-8014-8/19/\$31.00
©2019 IEEE

[18] Maie Bachmann, Jaanus Lass, HiieHinrikus, 2017, Single channel EEG analysis for detection of depression, Biomedical Signal Processing and Control, 31(2017)391-397, Elsevier.

[19] Systems, c. (2018). Eeg-based stress detection system using human emotions, 10,2360–2370.

[20]Khorshidtalab, a. 2011. “eeg signal classification for real-time brain-computer interface applications : a review,” no. May: 17–19